



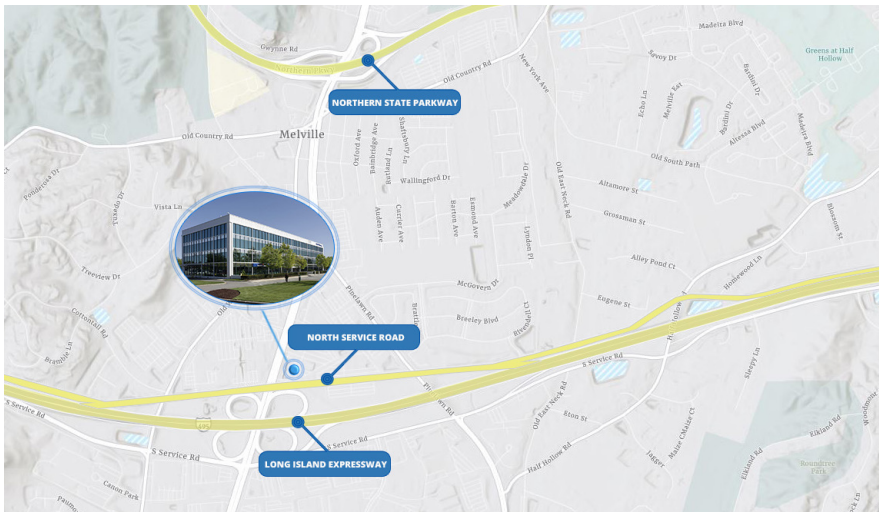
FOR LEASE > PREMIER MELVILLE OFFICE BUILDING

275 BROADHOLLOW ROAD
MELVILLE, NY



PROPERTY OVERVIEW

135,000 SQUARE FOOT BUILDING



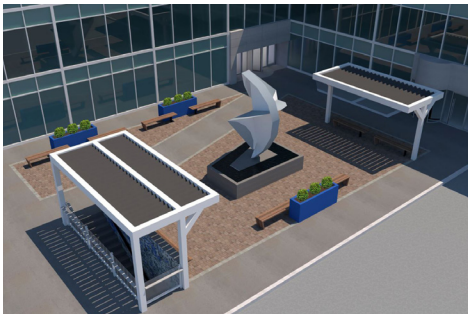
1 ST Floor	3 RD Floor	Garden Level
+/- 6,507 SF +/- 10,262 SF	+/- 31,703 SF	+/- 15,657 SF

ASKING LEASE PRICE: FLOORS 1-3: \$35.00 PSF/ GARDEN LEVEL: \$28.00 PSF

- Renovations include new entry plaza and lobby, outdoor amenity area, two-story atrium, bathrooms and elevator cabs
- Amenities: fitness center, conference facility and on-site café
- Exceptional views with floor to ceiling window lines
- Covid-19 navigation solutions
- Garden level space also available



SAMPLE PLAN



DARREN LEIDERMAN

NYS Licensed Salesperson

Dir: 516 284 3434

darren.leiderman@colliers.com

HERB AGIN

NYS Licensed Associate Broker

Dir: 516 328 6500

herb.agin@colliers.com

Copyright © 2020 Colliers International.
Information herein has been obtained from sources deemed reliable, however its
accuracy cannot be guaranteed. The user is required to conduct their own due diligence and verification.